




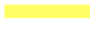

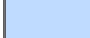


Key

-  **Proposed turbine**
-  2km radius indicator from site centre
-  Bridleway
-  Byway
-  Footpath
-  Long Distance Path
-  Blade tip may be visible
-  Hub and blade tip may be visible

Notes:
ZTV created using NextMap Britain®
5m resolution Digital Surface Model (DSM).

The DSM does account for the screening influence of buildings, hedgerows, trees, woodland and other landscape elements or features.

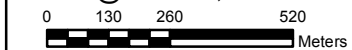
Sharpness Turbine Dimensions:
Blade tip height: 122m
Hub height: 80m

Project name: Sharpness Docks Wind Turbine

Title:
Public Rights of Way Within 2km Showing ZTV

Date: 06/12/2011

Scale @ A3: 1:16,000



Rev:-

A3

Figure: 9.9b

