

WIND FARM VISIT

We have now organised and completed two trips to an operational wind farm for community members. In June members of Beckingham cum Saundby Parish Council came along to a planning seminar for onshore wind organised by trade association RenewableUK, which included a trip to Bagmoor Wind Farm, near Scunthorpe.

In August we took another 18 local residents to Bagmoor Wind Farm to give people the chance to see and hear the wind turbines up close.

All those that attended agreed it was a valuable form of community engagement, enabling them to experience the realities of wind turbines themselves.



CONTACT US

If you would like more information on the project, please visit our website:

www.pfr.co.uk/Saundby

or email us at: community@pfr.co.uk

or call: 0800 731 7395

SAUNDBY WIND ENERGY INVESTIGATION – NEWSLETTER SEPTEMBER 2011



PROJECT OVERVIEW

Partnerships for Renewables is investigating the potential for a wind energy development on land near Saundby. At this stage we believe the site, which is owned by the Environment Agency, may be suitable for up to six 2.5 Megawatt wind turbines at a maximum height of 130m to tip.

Six turbines at the Saundby site would supply enough green electricity to meet the needs of approximately 7,200 homes for a year (33 GigaWatt Hours).

Monitoring mast application

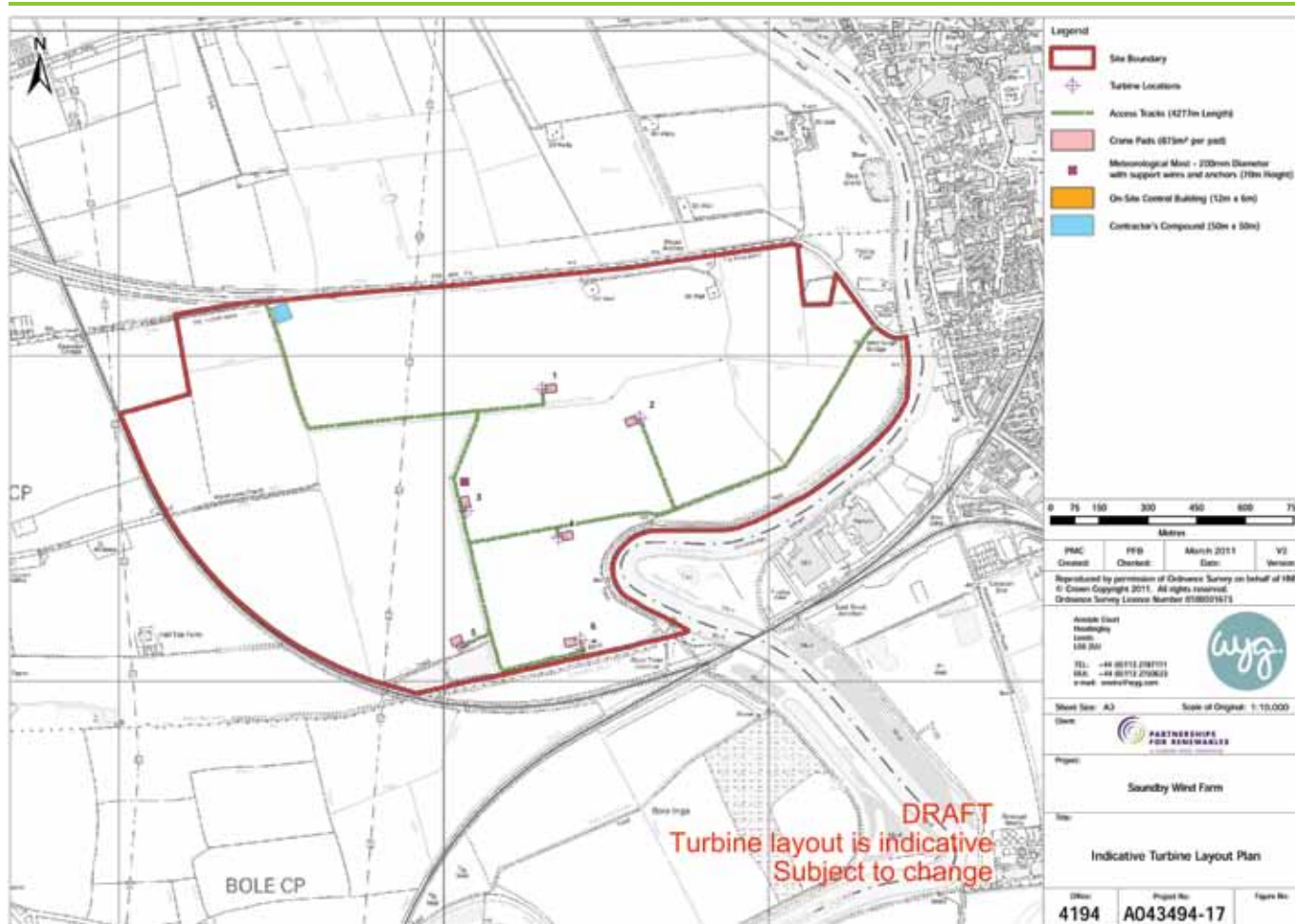
We have received planning permission from Bassetlaw District Council for a temporary wind monitoring mast. This 70 metre structure (approximately 20cm in diameter) will be installed on site in October and will gather accurate wind data to feed in to our investigations. This information will help inform our final site design and will allow us to ensure we have the most efficient and effective turbine layout.

Noise studies

Once the monitoring mast is installed we will begin noise studies, which will involve placing noise receptors at a selection of nearby properties and measuring background noise to correlate with the predicted noise of the turbines at various wind speeds. This allows us to ensure that any sound from the final layout of the wind farm does not negatively impact any residents.

Scoping report

After submitting a scoping report to the Council in April (this outlines the studies we plan to adopt during the site assessment process), we have now received a Scoping Opinion back. This includes responses from all the relevant statutory consultees including suggestions for any changes they think necessary to ensure that the future Environmental Impact Assessment considers all of the relevant site issues. A copy of this will be available to view at the October community drop-in surgery (details below).



NEXT PUBLIC CONSULTATION EVENT

October community surgery

We are holding a community drop-in surgery at the Recreation Room in Beckingham village on Wednesday 19 October from 3pm to 7pm.

These ongoing informal events offer an opportunity for local residents and business owners to talk to members of the project team and find out more information about our investigations and how the project is progressing.

At the surgery we will also be able to share more details of our technical and environmental investigations so far, including how we are progressing with ecology and ornithology studies. **We hope to see you there.**

